

FORCE 2000

MADE IN GERMANY





FSM 2000 5-piece drum set
Illustrated in CR High gloss red



SonorMuseum.de

INTRODUCTION

Sonor Drums represent the ultimate in drum manufacturing. Every single instrument is crafted with utmost care and dedication to every detail. At Sonor, our 115 years of experience produces products that leave our factory as tools to reach perfection in your performance.

With the introduction of the Force 2000 Series, we bring all drummers the opportunity to experience Sonor quality and sound. The Force 2000 Series offers Sonor's superior sound, reliability and function at your fingertips. Its' striking appearance introduces a new era in drum technology: the beginning of the 90's.

The Force 2000 Series brings a higher level of quality within reach of every drummer, that up to now, has only been available in our more expensive drum series.

The world's top professional drummers like Steve Smith, Chester Thompson, and Nicko McBrain recommend the Force 2000 for everyone who is serious about their drumming and is looking for top value at a more affordable price. The following pages will illustrate what makes the Force 2000 the most exciting new drum set for the 1990's.

FORCE 2000
MADE IN GERMANY



FSH 2000

+ FTP 2022

+ FG 222

+ 2 x FZ 2052

+ 1 x FZ 2093

Illustrated in CB High gloss black

5-piece drum set
Adaptive tom pack
Bass drum CB
Cymbal boom arm
Bass drum pedal
Bass drum block



SonorMuseum.de

S O U N D

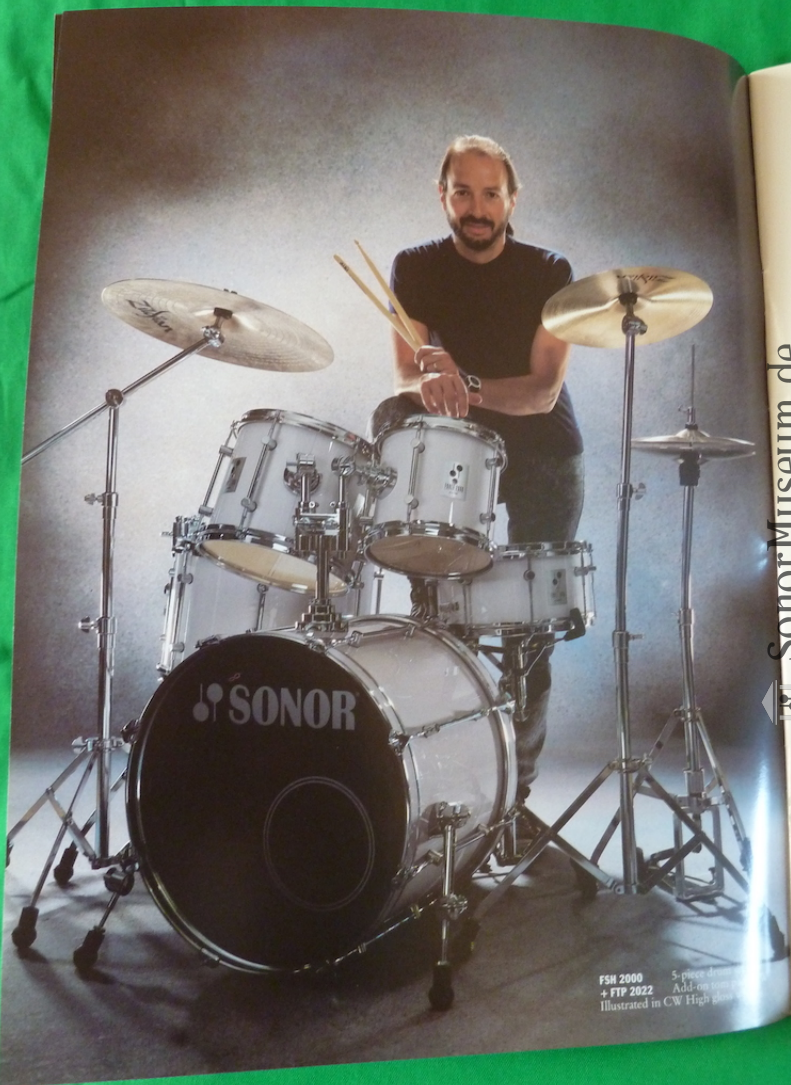
The most important feature of the Force 2000 Series is SOUND. Cross laminated 9-ply poplar wood shells are the foundation for the unique sound of the Force 2000. Each shell is made to exacting manufacturing standards for perfect roundness and even head-to-shell contact. Force 2000 drums have a powerful, lively tone with superior volume and outstanding projection. The Force 2000 snare drum comes with a high quality Sonor throw-off snare mechanism that allows for precise snare adjustments. Its' features include a 9-ply shell made of poplar with tubular lug casings. The Force 2000 snare drum has a brilliant and cutting sound with clear projection. The extended 6 1/2" deep shell ensures greater projection and response at all volumes. A ring muffler is equipped with each snare drum for control of undesired overtones.



Full resonant 9-ply poplar wood shell

**"The Force 2000 Series has a bright full sound,
and the quality is consistent with Sonor."**

Chester Thompson



FSH 2000
+ FIP 2022
Illustrated in CW High gloss

5-piece drum set
Add-on tom

D E S I G N

Serving as a guideline for the development of the Force 2000 was the Sonor Hilite Series, our most outstanding new product introduction of recent years. Construction details from the Hilite series have been adapted to the Force 2000 design including the tubular lug casings (pat. pend.). Other important patented design features have been added to the Force 2000 including a completely new tom holder system, floor tom leg mounts, and a new type of wing screw fitted to all components. The bass drum spurs are a Sonor innovation for which an international patent is pending. They feature forward angle and leg height memory gauges. This assists you in finding the ideal playing position, and reduces set-up time.

Bass drum spurs have memory gauges (pat. pend.) for forward angle and leg height adjustments.



"The best choice for a serious kit; for those dedicated to their drumming."

Steve Smith

FSH 2000 5-piece drum set CB
 + FTP 2022 Add-on tom pack CB
 + 1 x FZ 2052 Cymbal boom stand
 + 1 x FZ 2053 Cymbal boom arm
 + 1 x FZ 2055 Double tom stand
 Illustrated in CB High gloss black

H A R D W A R E

A brand new line of hardware is included with the Force 2000 Series. All stands are equipped with solid single braced wide angle legs for secure set ups. Oversized rubber feet ensure stability on any kind of floor. The cymbal stands have the unique quick release cymbal clamp (pat. pend.) used in the exclusive Protec Series. It provides for adjustment to tighten or remove the cymbal instantly. The hi hat stand is equipped with Sonor's patented bottom cymbal tilter for easy-to-use pre set angles. The double tom holder and stand have memory locks at all tom arm adjustments. Angle adjustment ratchets are concealed in castings and offer precision angle possibilities. Heavy chrome finish is standard on all hardware components for lasting beauty and protection.

New double tom holder with independently adjustable tom arms and memory locks for height and angle adjustments.



"The hardware is unbeatable in its class, solid and reliable. I wish I could have had something like that when I started."

Nicko McBrain

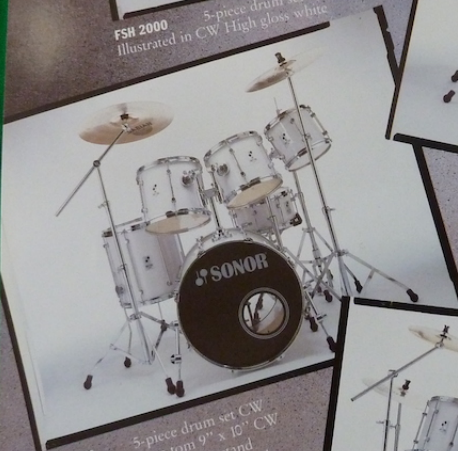


FSH 2000 5-piece drum set CW
Illustrated in CW High gloss white

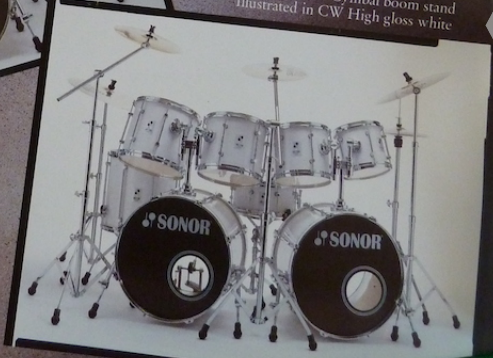
FSH 2000 5-piece drum set CW
+ **FTP 2022** Add-on tom pack CW
Floor tom not illustrated
Illustrated in CW High gloss white



FSH 2000 5-piece drum set CW
+ **FTP 2022** Add-on tom pack CW
+ **FG 222** Bass drum 16" x 22" CW
+ **1 x FZ 2093** Bass drum pedal
+ **1 x FZ 2050** Cymbal stand
+ **1 x FZ 2052** Cymbal boom stand
Illustrated in CW High gloss white



FSH 2000 5-piece drum set CW
+ **FT 210** Tom tom 9" x 10" CW
+ **1 x FZ 2055** Double tom stand
+ **1 x FZ 2052** Cymbal boom stand
Illustrated in CW High gloss white



DRUM SETS

FSH 2000 5-piece drum set consisting of:

- FD 206** Snare drum 6 1/2" x 14"
- FG 222** Bass drum 16" x 22"
- FT 212** Tom tom 10" x 12"
- FT 213** Tom tom 11" x 13"
- FFT 216** Floor tom 16" x 16"
- FZ 2093** Bass drum pedal
- FZ 2054** Hi hat stand
- FZ 2057** Snare drum stand
- FZ 2050** Cymbal stand
- FZ 2013b** Double tom holder

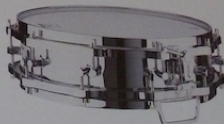
Optional snare drums:



FD 206 Snare drum 6 1/2" x 14" wood shell, available in CW, CB, CR.

FTP 2022 Add-on tom pack consisting of:

- FT 210** Tom tom 9" x 10"
- FT 214** Tom tom 12" x 14"
- FZ 2055** Double tom stand
- FZ 2052** Cymbal boom stand



FS 2500 Shell set consisting of:

- FD 206** Snare drum 6 1/2" x 14"
- FG 222** Bass drum 16" x 22"
- FT 212** Tom tom 10" x 12"
- FT 213** Tom tom 11" x 13"
- FFT 216** Floor tom 16" x 16"
- FZ 2013b** Double tom holder

D 420 Snare drum 4" x 14" piccolo seamless metal shell with die-cast hoops.



Available components:

- FG 222** Bass drum 16" x 22"
- FT 210** Tom tom 9" x 10"
- FT 214** Tom tom 12" x 14"
- FD 206** Snare drum 6 1/2" x 14"

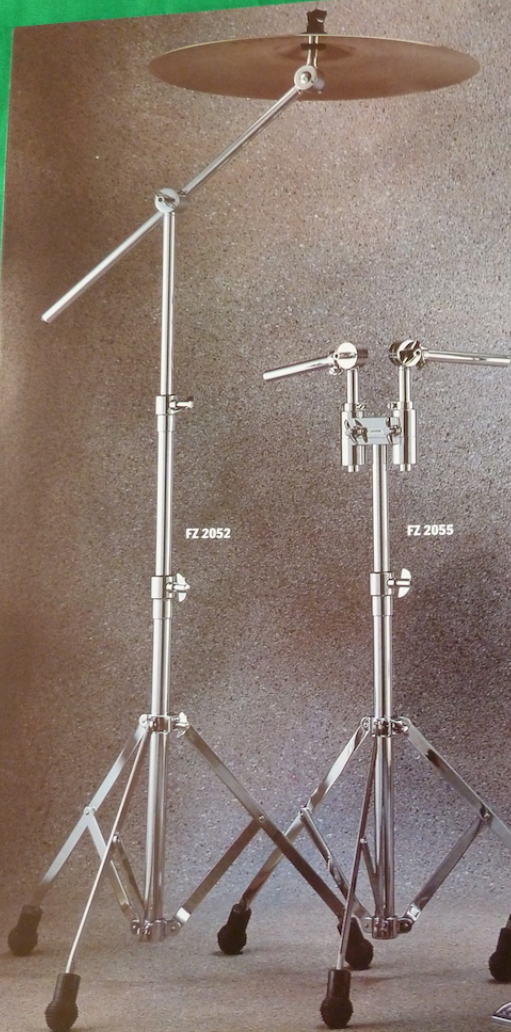
D 456 Snare drum 6 1/2" x 14" metal shell, 8 lugs.

Force 2000 drums are available in a choice of three covered finishes.

- CW** High gloss white
- CB** High gloss black
- CR** High gloss red

Optional snare units

- Z 4924** 24 strand stainless steel snares, cord snare attachment
- Z 4934** 34 strand stainless steel snares, cord snare attachment



FZ 2052



FZ 2055



FZ 2054

- FZ 2054 Hi hat stand
- FZ 2057 Snare drum stand
- FZ 2050 Cymbal stand
- FZ 2013b Double stand
- FZ 2055 Double tom holder
- FZ 2052 Double tom stand
- Z 5215e Cymbal boom arm
- Cymbal clamp (single)

- FH 2004 Hardware set consisting of:
- FZ 2093 Bass drum pedal
- FZ 2054 Hi hat stand
- FZ 2057 Snare drum stand
- FZ 2050 Cymbal stand



FZ 2053 Cymbal boom arm for various applications with cymbal stands, double tom stands, and vario clamps.

FZ 2050

FZ 2057

Bass drum pedal FZ 2093

The Force 2000 chain drive pedal offers smooth and fast action in any playing situation. Everything from 5-way beater angle adjustments to noise elimination chain guides have been designed for the most demanding player. A large mounting clamp allows for easy adjustment to the bass drum hoop. The basic pedal construction is also designed from the model that is standard with our Filine and Sonorline sets.

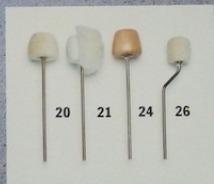
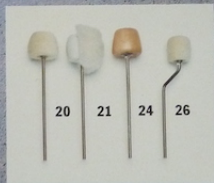
FZ 2093 - Bass drum pedal

Z 9392 - Double bass drum pedal

Z 9392



- Sch 20 Bass drum beater with felt head
- Sch 21 Bass drum beater with wool felt
- Sch 24 Bass drum beater with wooden head
- Sch 26 Quick beater with felt head
- Sch 27 NEW bass drum multi beater with interchangeable wood, felt, rubber, and acrylic impact surfaces.



Sch 27



FZ 2093

DRUM HEADS & STICKS

ORIGINAL SONOR DRUM HEADS MADE IN GERMANY

The new generation of Sonor drum heads feature the "extended play" qualities with special designation of "EP" on each head. These high

quality heads have maximum consistency and are available in a large choice of sounds and sizes.

Further details are available in our exclusive Sonor drum head catalog.

REGULAR WHITE COATED
available in thin and medium



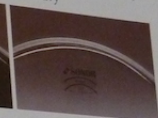
REGULAR SMOOTH WHITE
available in medium



REGULAR SMOOTH BLACK
available in medium



REGULAR TRANSPARENT
available in thin, medium, and heavy



XP X-TRA POWER
transparent two-ply head, thin and heavy thickness



XP X-TRA POWER
black two-ply head, in heavy thickness



CP CONTROLLED POWER
transparent head with control center, medium



RC RING CONTROL
transparent head with control ring, medium



CN CLASSIC CALFSKIN HEAD
genuine natural calfskin head, medium (batter) and thin (snare)



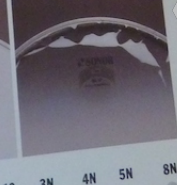
CC SNARE DRUM HEAD
transparent batter head with control center and control ring, medium



SP SNARE DRUM HEAD
white coated batter head with control center, medium



SD SNARE HEAD
transparent head in specific snare thicknesses thin and medium



- 25613 Sonor hickory drum sticks with wood tip (3, 4, 5, 6, 8)
25614 Sonor maple drum sticks with wood tip (7, 10)
25615 Sonor hickory drum sticks with nylon tip (3N, 4N, 5N, 8N)

3

4

5

6

8

7

10

3N

4N

5N

8N



ACCESSORIES



Vario clamp system

This system allows for a variety of cymbal and drum set-ups. The mechanism clamps additional tom or cymbal latches for more convenient placement.

Z 5526a Single vario clamp



Z 5111 External muffler, small

Z 5112 External muffler, large



Z 5815 Drummer's seat

Z 5070 Spin key

Z 5071 Drum key, long

Z 5072 Drum key, short



Z 9210 Drum Care Kit consisting of wood polish, chrome polish, light machine oil, lube and cloth, complete in a black vinyl bag.



SONOR®