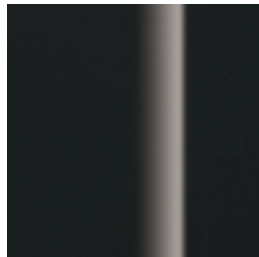
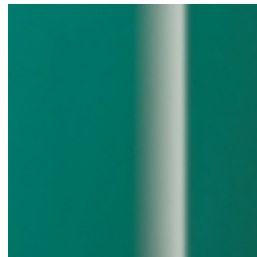


# FORCE FARBEN

FORCE 3003  
>



**B** Piano Black



**CA** Caribic



**P** Purple



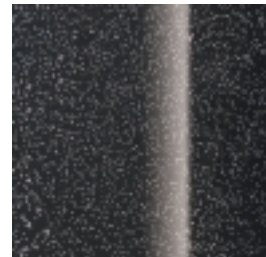
**HM** Honey Maple



**RM** Red Maple



**WLS** White Sparkle

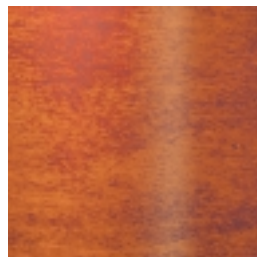


**BLS** Black Sparkle

FORCE 2003  
>



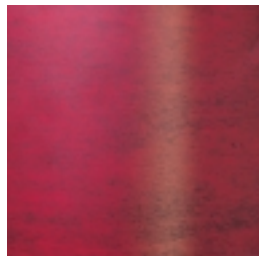
**WMB** Midnight Black



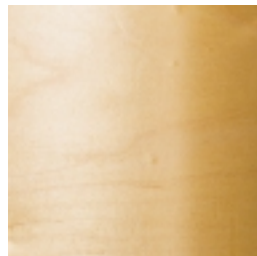
**WSA** Stain Amber



**WDB** Diamond Blue

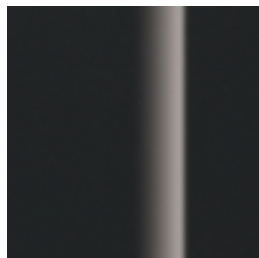


**WCR** Cherry Red



**WNA** Wax Natural

FORCE 1003  
>



**CBB** Black



**CRS** Reflex Silver



**CWR** Wine Red

# ÜBERSICHT FORCE DRUMS

<b>FORCE 3003</b>			Shell Sets >	<b>FSH 305</b>	<b>FSH 315</b>	<b>FSH 325</b>	<b>Single</b>
<b>F 3017 BD</b>	Bass Drum	20" x 17 1/2"	■				■
<b>F 3217 BD</b>	Bass Drum	22" x 17 1/2"		■	■		■
<b>F 3105 SWP HW</b>	Snare Drum, Holzkessel	10" x 5"					■
<b>F 3125 SWP HW</b>	Snare Drum, Holzkessel	12" x 5"					■
<b>F 3145 SS</b>	Snare Drum, Stahlkessel	14" x 5"					■
<b>F 3145 SW</b>	Snare Drum, Holzkessel	14" x 5"	■	■	■		■
<b>F 3008 T</b>	Tom Tom mit T.A.R.	8" x 8"					■
<b>F 3010 T</b>	Tom Tom mit T.A.R.	10" x 9"	■	■			■
<b>F 3012 T</b>	Tom Tom mit T.A.R.	12" x 10"	■	■	■		■
<b>F 3013 T</b>	Tom Tom mit T.A.R.	13" x 11"			■		■
<b>F 3014 T</b>	Tom Tom mit T.A.R.	14" x 12"	■	■			■
<b>F 3016 T</b>	Tom Tom mit T.A.R.	16" x 14"					■
<b>F 3014 FT</b>	Floor Tom	14" x 14"					■
<b>F 3016 FT</b>	Floor Tom	16" x 16"			■		■
<b>DTH 313</b>	Doppel Tom Halter		■	■	■		■
<b>HS 400</b>	Hardware Set		■	■	■		■
<b>DT 211</b>	Drummer Sitz		■	■	■		■
<b>TA 328</b>	Tom Arm		■	■			■
<b>MC 326</b>	Multi Clamp		■	■			■
<b>JS Jungle Set</b>			<b>JS 3</b>				<b>Single</b>
	Bass Drum	16" x 16"	■				
	Tom Tom mit T.A.R.	10" x 9"	■				
	Floor Tom	13" x 11"	■				
<b>STH 611 AX-6</b>	Single Tom Halter		■				■
<b>JSD 10</b>	Jungle Snare, Natural	10" x 2"					■

■ vorkonfigurierte Setups  
 ■ als Einzelkomponenten erhältlich

<b>FORCE 2003</b>			Shell Sets >	<b>FSH 205</b>	<b>FSH 215</b>	<b>FSH 225</b>	<b>Single</b>
<b>F 2017 BD</b>	Bass Drum	20" x 17 1/2"	■				■
<b>F 2217 BD</b>	Bass Drum	22" x 17 1/2"			■	■	■
<b>F 2145 SS</b>	Snare Drum, Stahlkessel	14" x 5"					■
<b>F 2145 SW</b>	Snare Drum, Holzkessel	14" x 5"	■	■	■		■
<b>F 2008 T</b>	Tom Tom mit T.A.R.	8" x 8"					■
<b>F 2010 T</b>	Tom Tom mit T.A.R.	10" x 9"	■	■			■
<b>F 2012 T</b>	Tom Tom mit T.A.R.	12" x 10"	■	■	■		■
<b>F 2013 T</b>	Tom Tom mit T.A.R.	13" x 11"				■	■
<b>F 2014 T</b>	Tom Tom mit T.A.R.	14" x 12"			■		■
<b>F 2014 FT</b>	Floor Tom	14" x 14"	■				■
<b>F 2016 FT</b>	Floor Tom	16" x 16"				■	■
<b>DTH 313</b>	Doppel Tom Halter		■	■	■		■
<b>HS 200</b>	Hardware Set		■	■	■		■
<b>TA 328</b>	Tom Arm			■			■
<b>MC 326</b>	Multi Clamp			■			■

<b>Force 1003</b>			Shell Sets >	<b>FSH 105</b>	<b>FSH 125</b>
	Bass Drum	20" x 16"	■		
	Bass Drum	22" x 16"			■
	Snare Drum, Stahlkessel	14" x 5"	■	■	
	Tom Tom	10" x 9"	■		
	Tom Tom	12" x 10"	■	■	
	Tom Tom	13" x 11"		■	
	Floor Tom	14" x 14"	■		
	Floor Tom	16" x 16"			■
<b>DTH 213 N</b>	Doppel Tom Halter		■	■	
	Hardware Set, vierteilig		■	■	